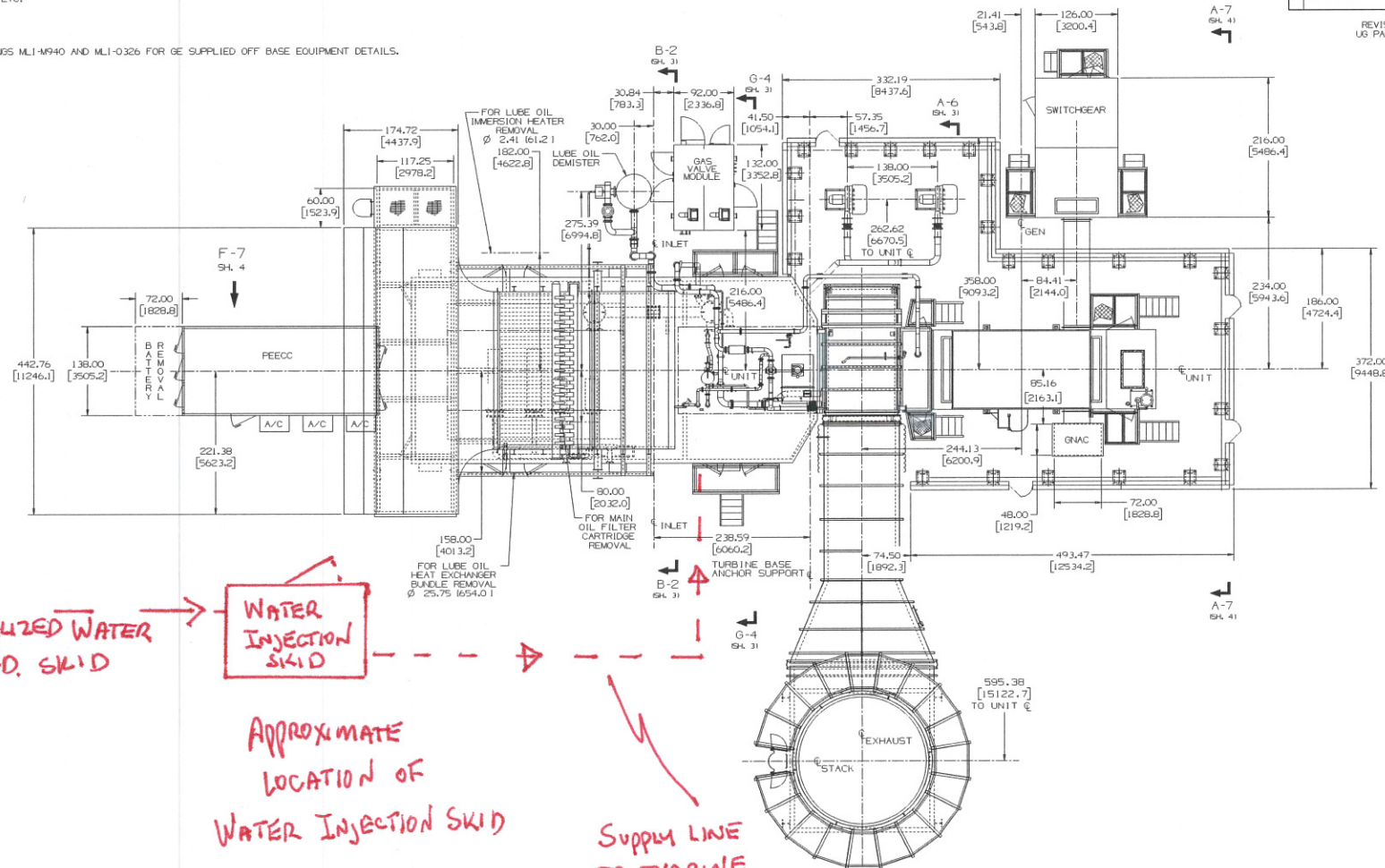


[illegible]

7. REFERENCE DRAWINGS MLI-M940 AND MLI-0326 FOR GE SUPPLIED OFF BASE EQUIPMENT DETAILS.

E		123E1125	1	1
REV	DESCRIPTION	REVISIONS	DATE	APPROV
	REVISED ALL SHEETS UPDATED NOTE 4 AND ADDED NOTES 7 AND 8 GAS VALVE MODULE, PEECC, SWITCHGEAR, GASKET EXHAUST AND INLET SYSTEMS AN# CDB3426 R.G. PERRY			
A			01-08-06	VCM
	UPDATED REV STATUS OF SHEETS ADDED ACQUISITION BARRIER WALL AROUND THE PLUMBER ROTATED SWITCHGEAR 90° CCW. ROTATED EXHAUST FUME BLOWERS ON ZONE F-4. UPDATED ALL LUB OIL VENT AND OIL TANK VENT PIPING. UPDATED WALKWAYS AROUND OF SWITCHGEAR. UPDATED PEECC ON ZONE F-2 DELETED NOTE 6 ON ZONE F-4 AN# CDB3426 IVAN A. MATA			
B			02-01-16	VCM

REVISE ON CAD ONLY
UG PART: 123E1125P00



FROM
DEMINERALIZED WATER
FORWARD. SKID

WATER
INJECTION
SIDE

APPROXIMATE
LOCATION OF
WATER INJECTION SKIN

Supply LINE
TO TURBINE
(LINE LENGTH NOT
TO EXCEED 100 FEET)

TR - 11/30/10

B	B	B	B	REV	REV STATUS OF SHEETS
4	3	2	1	SH	

PROJECT NAME: PSEG, NORRISTOWN
GE DESIGN MEMO: 020730

 GE Power Generation

OUTLINE, MECHANICAL
GAS TURBINE & LOAD

FIRST MADE FOR M.L.-7A1PEA234-1T4			01
SIZE	CASE CODE	QTY NO	12351125

GRO730 ¹ AMID